



# Ysgol Maes Garmon

Llawlyfr Dewisiadau Cyfnod Allweddol 4  
Key Stage 4 Options Handbook





# Gair gan ein Pennaeth...

## A word from our Headteacher...

*Bronwen Hughes*



**Croeso i Lawlyfr Dewisiadau Cyfnod Alweddol 4. Mae dysgwyr Blwyddyn 9 eisoes wedi cael cyflwyniadau am yr holl bynciau TGAU sydd yn y llawlyfr yma, a bwriad y llawlyfr yw rhoi cyfle i chi fel rhieni edrych dros fanylebau y pynciau TGAU mae eich plentyn yn eu ffafrio fel eich bod chi'n cael cyfle i drafod eu dewisiadau efo nhw yn sgil y dyheadau sydd ganddynt ar gyfer y dyfodol.**

**Wrth i ddysgwyr symud at flwyddyn 10 a chychwyn eu hastudiaethau TGAU, byddant yn teimlo bod eu gwersi ychydig yn wahanol. Mae'n bwysicach nag erioed i sicrhau bod offer ysgrifennu a bag synhwyrol ganddynt yn ddyddiol, gan fod nifer o bynciau'n ddibynnol ar ffolderi yn hytrach na llyfrau ysgrifennu, a bydd gwaith ymchwil cyson yn gorfod digwydd fel rhan o'r paratodau tuag at waith cwrs a'r arholiadau terfynol.**

**Gofynnwn i'r dysgwyr ddewis 5 pwnc yn y lle cyntaf er mwyn i ni fedru llunio colofnau dewis terfynol. Yna, byddwn yn rhyddhau'r colofnau dewis i'r dysgwyr eto, er mwyn iddynt ddewis y tri phwnc y dymunant eu hastudio ar gyfer TGAU. Er y byddwn yn gwneud popeth posib i sicrhau bod pob dysgwr yn hapus, mae'n debygol y bydd rhai dysgwyr yn cael eu siomi os oes dau o'u pynciau dewis o fewn yr un golofn. Rhaid hefyd nodi os bydd niferoedd yn isel iawn ar gyfer ambell bwnc, efallai na fydd modd cynnal y cwrs hwnnw.**

**Edrychaf ymlaen at sgwrsio efo'r dysgwyr i ddarganfod pa lwybrau y maent am eu dilyn ar gyfer eu cyrsiau TGAU. Cofiwch os oes angen unrhyw arweiniad pellach ar eich plentyn bod modd iddynt drafod efo aelod o staff dros y dyddiau nesaf. Nid oes yr un cwestiwn yn gwestiwn annoeth!**

***Welcome to the Key Stage 4 Options Handbook. Year 9 learners have already received presentations about all the GCSE subjects in this handbook, and the intention of the handbook is to give you as parents the opportunity to look over the specifications of the GCSE subjects your child prefers so that you can discuss their choices with them in light of their aspirations for the future.***

***As learners move to year 10 and start their GCSE studies, they will feel that their lessons are a little different. It is more important than ever to ensure that they have writing equipment and an appropriate bag on a daily basis, as many subjects are dependent on folders rather than notebooks, and constant research work will have to be undertaken as part of the preparations for coursework and the final exams.***

***We ask learners to choose 5 subjects in the first instance so that we can draw up final option columns. Then, we will release the columns to the learners again, so that they can choose the three subjects they wish to study for GCSE. While we will do everything possible to ensure that all learners are happy, it is likely that some learners will be disappointed if two of their chosen subjects are in the same column. It must also be noted that if numbers are very low for some subjects, it may not be possible to run a course.***

***I look forward to speaking with the learners to find out which routes they want to follow for their GCSE courses. Remember that if your child needs any further guidance, they can discuss their concerns with a member of staff over the next few days. There is no such thing as a foolish question!***



# Noson Gynnydd Blwyddyn 9

## Year 9 Progress Evening

**06/03/2025** rhwng 16:00 a 18:30  
yn neuadd yr ysgol

**06/03/2025** *between 16:00 and 18:30*  
*in the school hall*

The logo for Weduc, featuring the word "weduc" in a lowercase, rounded, teal-colored font. A registered trademark symbol (®) is located at the top right of the letter 'c'.

**Bydd y noson yn cael ei threfnu drwy Weduc. Os nad ydych wedi cofrestru i ddefnyddio Weduc, cysylltwch â'r ysgol.**

***The evening will be arranged via Weduc. If you have not yet registered to use Weduc, please contact the school.***



# CWRICWLWM BLYNYDDOEDD 10 AC 11

## YEARS 10 AND 11 CURRICULUM

Yn ystod yr wythnosau nesaf, bydd holl ddysgwyr blwyddyn 9 Ysgol Maes Garmon yn dewis y pynciau y byddant yn eu hastudio ym mlynnyddoedd 10 ac 11 (Cyfnod Allweddol 4).

Mae'r meysydd profiad isod yn orfodol i bob dysgwr. **Yn ogystal, rhaid iddynt ddewis 3 phwnc arall.**

**Cymraeg**

**Saesneg**

**Mathemateg**

**Gwyddoniaeth**

**Addysg Bersonol a Chymdeithasol**

**Addysg Grefyddol**

**Addysg Gorfforol**

**Bagloriaeth Cymru**

Ar hyn o bryd, mae asesiad y mwyafrif o bynciau CA4 yn arwain at Dystysgrif Gyffredinol Addysg Uwchradd (TGAU). Gall cynnwys a dulliau asesu rhai cyrsiau newid dros y ddwy flynedd nesaf.

Over the next few weeks, all year 9 learners at Ysgol Maes Garmon will be choosing the subjects that they will study in years 10 and 11 (Key Stage 4).

The areas of experience below are compulsory for all learners. **In addition, they have to choose 3 other subjects.**

**Welsh**

**English**

**Mathematics**

**Science**

**Personal and Social Education**

**Religious Education**

**Physical Education**

**Welsh Baccalaureate**

At present, the assessment of most KS4 subjects leads to a General Certificate of Secondary Education (GCSE). The content and assessment methods of some subjects may change over the next two years.





## Manyleb

Mae TGAU Cymraeg yn gymhwyster sy'n annog ymgeiswyr i ddatblygu eu diddordeb a'u brwdfrydedd yn y Gymraeg a'u harfogi i gyfrannu at gymdeithas ddwyieithog yn yr unfed ganrif ar hugain.

### Gwobr Unigol a Dwyradd

#### Uned 1: Naratif (Nofel)

Arholiad Ysgrifenedig: 1 awr 30 munud (60 marc)

#### Uned 2: Hunaniaeth

Trafodaeth mewn grwpiau o 3 ar sail testun gweledol o leiaf awr o hyd (hyd at 15 munud)  
Asesiad di-arholiad (40 marc)

#### Uned 3: Agweddau

Tasg 1: Gwerthfawrogi a chymharu cerddi.

Tasg 2: Cyflwyniad Unigol ar Sail Ymchwil (5-7 munud yn cynnwys cwestiynau)

Asesiad di-arholiad (60 marc)

#### Uned 4a: Cysylltiadau leithyddol

Cwestiynau darllen, golygu testun a dewis un dasg ysgrifennu o ddwy  
Arholiad ysgrifenedig: 1 awr 30 munud (60 marc)

#### Uned 4b: Cysylltiadau leithyddol

Cwestiynau darllen, golygu testun a dewis dwy dasg ysgrifennu (un orfodol a'r ail yn un o ddau ddewis)

Arholiad ysgrifenedig: 2 awr (90 marc)

### Gwobr Dwyradd yn unig

#### Uned 5: Ymateb a Chreu

Trafodaeth grŵp a thasg ysgrifennu  
Asesiad di-arholiad (60 marc)

#### Uned 6: Cyfleu Ystyr

Astudio tair stori fer.

Arholiad ysgrifenedig 1 awr 30 munud (60 marc)

### Dull Asesu

**Uned 1** - (Gwobr Unigol) Arholiad Ysgrifenedig **30%**  
- (Gwobr Dwyradd) Arholiad Ysgrifenedig **15%**

**Uned 2** - (Gwobr Unigol) Asesiad di-arholiad **20%**  
- (Gwobr Dwyradd) Asesiad di-arholiad **10%**

**Uned 3** - (Gwobr Unigol) Asesiad di-arholiad **20%**  
- (Gwobr Dwyradd) Asesiad di-arholiad **10%**

**Uned 4a** - (Gwobr Unigol) Arholiad ysgrifenedig **30%**

**Uned 4b** - (Gwobr Dwyradd) Arholiad ysgrifenedig **22.5%**

**Uned 5** - (Gwobr Dwyradd) Asesiad di-arholiad **20%**

**Uned 6** - (Gwobr Dwyradd) Arholiad ysgrifenedig **22.5%**

## Syllabus

*GCSE Welsh is a qualification that encourages candidates to develop their interest and enthusiasm in Welsh and to enable them to contribute to a bilingual society of the twenty-first century.*

### Individual and Double Award

#### Unit 1: Narrative (Novel)

Written Exam: 1 hour 30 minutes (60 marks)

#### Unit 2: Identity

Discussion in groups of 3 based on a visual text at least an hour long (up to 15 minutes)

Non-exam assessment (40 marks)

#### Unit 3: Attitudes

Task 1: Appreciate and compare poems.

Task 2: Individual Research-Based Presentation (5-7 minutes including questions)

Non-exam assessment (60 marks)

#### Unit 4a: Linguistic Connections

Reading questions, editing text and choosing one writing task from two

Written exam: 1 hour 30 minutes (60 marks)

#### Unit 4b: Linguistic Connections

Reading questions, editing text and choosing two writing tasks (one mandatory and the second will be one of two options)

Written exam: 2 hours (90 marks)

### Double Award only

#### Unit 5: Response and Creation

Group discussion and writing task  
Non-exam assessment (60 marks)

#### Unit 6: Conveying Meaning

Study three short stories. Written exam 1 hour 30 minutes (60 marks)

### Assessment Method

**Unit 1** - (Individual Award) Written Exam **30%**  
- (Double Award) Written Exam **15%**

**Unit 2** - (Individual Award) Non-exam assessment **20%**  
- (Double Award) Non-exam assessment **10%**

**Unit 3** - (Individual Award) Non-exam assessment **20%**  
- (Double Award) Non-exam assessment **10%**

**Unit 4a** - (Individual Award) Written examination **30%**

**Unit 4b** - (Double Award) Written examination **22.5%**

**Unit 5** - (Double Award) Non-exam assessment **20%**

**Unit 6** - (Double Award) Written examination **22.5%**





## Manyleb

Bydd mwyafrif y dysgwyr yn ennill y Wobr Ddwbl a dim ond mewn amgylchiadau eithafol y gellir ystyried dysgwyr ar gyfer y wobr unigol.

### Blwyddyn 10

#### Uned 1: Cyd-destun ac Ystyr

Arholiad Ysgrifenedig: 1 awr 30 munud

#### Uned 2: Perthyn.

Asesiad di-arholiad: 7 awr

#### Uned 3: Dylanwad a Phwêr.

Asesiad di-arholiad: 5 awr 55 munud

### Blwyddyn 11

#### Gwobr Unigol

##### Uned 4a: Cymhellion

Arholiad ysgrifenedig: 1 awr 30 munud

#### Gwobr Ddwbl

##### Uned 4b: Cymhellion

Arholiad ysgrifenedig: 1 awr 30 munud

##### Uned 5: Arholiad Parhad a Newid

Arholiad Ysgrifenedig: 1 awr 30 munud

#### Dull Asesu

**Uned 1** - (Gwobr Sengl) Arholiad Ysgrifenedig **30%**

- (Gwobr Ddwbl) Arholiad Ysgrifenedig **15%**

**Uned 2** - (Gwobr Sengl) Asesiad di-arholiad **20%**

- (Gwobr Ddwbl) Asesiad di-arholiad **10%**

**Uned 3** - (Gwobr Sengl) Asesiad di-arholiad **20%**

- (Gwobr Ddwbl) Asesiad di-arholiad **10%**

**Uned 4a** - (Gwobr Sengl) Arholiad ysgrifenedig **30%**

**Uned 4b** - (Gwobr Ddwbl) Arholiad ysgrifenedig **20%**

**Uned 5** - (Gwobr Ddwbl) Arholiad ysgrifenedig **20%**

## Syllabus

*The majority of learners will take the Double Award and it's only in extreme circumstances that learners maybe considered for the single award.*

### Year 10

#### Unit 1: Context and Meaning

Written Exam: 1 hour 30 mins

#### Unit 2: Belonging

Non-examination assessment: 7hours

#### Unit 3: Influence and Power

Non-examination assessment: 5 hours 55 mins

### Year 11

#### Single Award

##### Unit 4a: Motivations

Written Exam: 1 hour 30 mins

#### Double Award

##### Unit 4b: Motivations

Written Exam: 1 hour 30 mins

##### Unit 5: Continuity and Change

Written Exam: 1 hour 30 mins

#### Assessment Method

**Unit 1** - (Single Award) Written Exam **30%**

- (Double Award) Written Exam **15%**

**Unit 2** - (Single Award) Non-examination assessment **20%**

- (Double Award) Non-examination assessment **10%**

**Unit 3** - (Single Award) Non-examination assessment **20%**

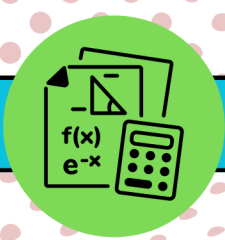
- (Double Award) Non-examination assessment **10%**

**Unit 4a** - (Single Award) Written Exam **30%**

**Unit 4b** - (Double Award) Written Exam **20%**

**Unit 5** - (Double Award) Written Exam **20%**





## Manyleb

1. Rhif
2. Algebra
3. Geometreg a mesurau
4. Ystadegaeth a thebygolrwydd

Mae'r cymhwyster TGAU Mathemateg a Rhifedd (Dwyradd) yn cefnogi dysgwyr i:

- wneud cysylltiadau rhwng gwahanol feysydd mathemateg a meysydd eraill o'r cwricwlwm
- datblygu eu dealltwriaeth gysyniadol wrth esbonio, mynegi a chynrychioli cysyniadau mewn ffurfiau diriaethol a haniaethol
- cyfleu sefyllfaoedd haniaethol a senarios byd go iawn gan ddefnyddio symbolau a mynegiadau mathemategol
- datblygu eu gallu i ddefnyddio ffeithiau, technegau a pherthnasoedd mathemategol yn ddiraffferth i ddatrys problemau
- adnabod strwythurau mathemategol sylfaenol o fewn problemau a datblygu strategaethau i'w datrys
- datblygu dealltwriaeth o'r berthynas rhwng cysyniadau mathemategol a'r defnydd o gyfiawnhad a phroffion
- sicrhau sylfaen gref mewn mathemateg ariannol i'w paratoi ar gyfer bywyd a gwaith
- datblygu hyder wrth ddefnyddio a chymhwyso technoleg ddigidol i helpu i ddatrys problemau mathemategol ac ystadegol.

## Dulliau Asesu

### Uned 1: Mathemateg Ariannol a Chymwysiadau Eraill o Rifedd

Arholiad ysgrifenedig

Haen Uwch: 1 awr 45 munud (80 marc)

Haen Sylfaenol: 1 awr 30 munud (65 marc)

30% o'r cymhwyster

### Uned 2: Digyfrifiannell

Arholiad ysgrifenedig

Haen Uwch: 1 awr 45 munud (80 marc)

Haen Sylfaenol: 1 awr 30 munud (65 marc)

30% o'r cymhwyster

### Uned 3: Caniateir cyfrifiannell

Arholiad ysgrifenedig

Haen Uwch: 2 awr (90 marc)

Haen Sylfaenol: 1 awr 45 munud (75 marc)

40% o'r cymhwyster

## Syllabus

1. Number
2. Algebra
3. Geometry and measures
4. Statistics and probability

GCSE Mathematics and Numeracy (Double Award) qualification supports learners to:

- make connections between different areas of mathematics and with other areas of the curriculum
- develop their conceptual understanding in explaining, expressing and representing concepts in both concrete and abstract forms
- communicate both abstract situations and real-world scenarios using mathematical symbols and expressions
- develop their ability to use mathematical facts, techniques and relationships fluently to solve problems
- recognize underlying mathematical structures within problems and develop strategies to solve them
- develop an understanding of relationships between mathematical concepts and the use of justifications and proofs
- gain a strong foundation in financial mathematics to equip them for life and work
- develop confidence in using and applying digital technology to help solve mathematical and statistical problems.

## Assessment methods

### Unit 1: Financial Mathematics and Other Applications of Numeracy

Written examination

Higher Tier: 1 hour 45 minutes (80 marks)

Foundation Tier: 1 hour 30 minutes (65 marks)

30% of qualification

### Unit 2: Non-calculator

Written examination

Higher Tier: 1 hour 45 minutes (80 marks)

Foundation Tier: 1 hour 30 minutes (65 marks)

30% of qualification

### Unit 3: Calculator-allowed

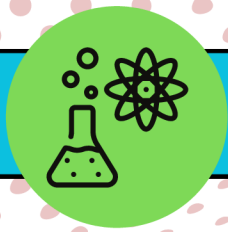
Written examination

Higher Tier: 2 hours (90 marks)

Foundation Tier: 1 hour 45 minutes (75 marks)

40% of qualification





# GWYDDONIAETH (DWYRADD)/ SCIENCE (DOUBLE AWARD)

## Manyleb

Cynigir dau gwrs gwahanol mewn Gwyddoniaeth. Bydd yr athrawon Gwyddoniaeth yn cynghori'r dysgwyr ynglŷn â pha gwrs yw'r mwyaf addas ar eu cyfer.

### 1. TGAU Gwyddoniaeth (Dwyradd Cymru)

Yn unedau Blwyddyn 10 bydd y dysgwyr yn datblygu eu dealltwriaeth o wyddoniaeth a phrosesau gwyddonol, ac yn datblygu cysyniadau gwyddonol yn unedau Blwyddyn 11. Dilynir tair uned ym Mlwyddyn 10 a phedair uned ym Mlwyddyn 11. Mae'n bosib sefyll y profion ar ddwy lefel, Haen Uwch (Graddau A\*-D) a'r Haen Sylfaenol (Graddau C-G). Mi fydd Uned 7 yn cael ei sefyll yn ystod hanner cyntaf tymor y gwanwyn ym mlwyddyn 11.

### 2. TGAU Gwyddoniaeth Gymhwysol (Dwyradd Cymru)

Yn unedau Blwyddyn 10 bydd y dysgwyr yn datblygu eu dealltwriaeth o wyddoniaeth a phrosesau gwyddonol, ac yn datblygu cysyniadau gwyddonol yn unedau Blwyddyn 11. Dilynir dwy uned ym Mlwyddyn 10 a thair uned ym Mlwyddyn 11. Mae'n bosib sefyll y profion ar ddwy lefel, Haen Uwch (Graddau A\*-D) a'r Haen Sylfaenol (Graddau C-G). Mi fydd Uned 4 yn cael ei sefyll yn ystod ail hanner tymor yr hydref ac uned 5 yn cael eistedd yn ystod hanner cyntaf tymor y gwanwyn ym mlwyddyn 11.

## Dull Asesu

### Assessment Method

#### Gwyddoniaeth (Dwyradd Cymru) Science (Double Award)

2 TGAU / 2 GCSEs

#### Blwyddyn 10 / Year 10

Bioleg / Biology - 15%

Cemeg / Chemistry - 15%

Ffiseg / Physics - 15%

#### Blwyddyn 11 / Year 11

Bioleg / Biology - 15%

Cemeg / Chemistry - 15%

Ffiseg / Physics - 15%

Asesiad Ymarferol / Practical Assessment - 10%

## Syllabus

Two different courses are offered in Science. The Science teachers will advise learners on which course is the most suitable for them to take.

### 1. GCSE Science (Double Award Wales)

In Year 10 units learners will develop their understanding of science and scientific processes, and develop scientific concepts in Year 11. Three units will be studied in Year 10 and four units in Year 11. It is possible to sit the examination either at Higher Tier (Grades A\*-D) or Foundation Tier (C-G Grades). Unit 7 exams will be held in the first half of the Spring term in year 11.

### 2. GCSE Applied Science (Double Award Wales)

In Year 10 units learners will develop their understanding of science and scientific processes, and develop scientific concepts in Year 11. Two units will be studied in Year 10 and three units in Year 11. It is possible to sit the examination either at Higher Tier (Grades A\*-D) or Foundation Tier (C-G Grades). Unit 4 exams will be held in the second half of the Autumn term and unit 5 in the first half of the Spring term in year 11.

#### Gwyddoniaeth Gymhwysol Applied Science

2 TGAU / 2 GCSEs

#### Blwyddyn 10 / Year 10

Uned 1 / Unit 1 - 22.5%

Uned 2 / Unit 2 - 22.5%

#### Blwyddyn 11 / Year 11

Uned 3 / Unit 3 - 25%

Uned 4 / Unit 5 - 20%

Asesiad Ymarferol / Practical Assessment - 10%



## Manyleb

Mae'r ysgol yn cynnig Cymhwyster Bagloriaeth Cymru i bawb yn CA4 a CA5. Bydd holl ddysgwyr blwyddyn 10 yn astudio'r Bagloriaeth Genedlaethol.

Ffocws Bagloriaeth Cymru yng Nghyfnod Allweddol 4 yw darparu cyfrwng i ddysgwyr atgyfnerthu a meithrin sgiliau hanfodol a chyflogadwyedd a chaiff eu gwerthfawrogi gan addysgwyr ôl-16 a darpar gyflogwyr.

I lwyddo, rhaid cwblhau aseiniadau'r Dystysgrif Her Sgiliau sy'n cynnwys y canlynol:

- Prosiect Unigol – cwblhau gweithgaredd ymchwil mewn maes sydd o ddiddordeb personol neu sy'n adlewyrchu dyheadau ar gyfer y dyfodol o ran addysg neu yrfa.
- Her Menter a Chyflogadwyedd - meithrin sgiliau a phriodolddau mentrus a gwella cyflogadwyedd.
- Her Dinasyddiaeth Fyd-eang - darparu cyfleoedd i ddeall materion byd-eang ac ymateb yn briodol iddynt tra'n meithrin sgiliau penodol ym maes Meddwl yn Feirniadol a Datrys Problemau a Chreadigedd ac Arleosi.

Hefyd rhaid ennill gradd A\* - C TGAU mewn Saesneg Iaith neu Gymraeg Iaith ynghyd â Mathemateg – Rhifedd. Mae angen tri chymhwyster TGAU A\* - C arall hefyd, y gall dau ohonynt fod yn gymwysterau gwahanol e.e. cwrs BTEC neu NVQ.

Bydd pob dysgwr sy'n cwblhau'r Dystysgrif Her Sgiliau yn derbyn cymhwyster Her Sgiliau. Mae posib i ddysgwyr sydd yn annhebygol o gyrraedd y graddau TGAU angenrheidiol uchod gwblhau cwrs Bagloriaeth Sylfaen Cymru.

## Syllabus

*The school offers all KS4 and KS5 learners the Welsh Baccalaureate Qualification. All learners in year 10 will study the National Baccalaureate.*

*The central focus of the Welsh Baccalaureate at Key Stage 4 is to provide a vehicle for learners to develop essential and employability skills valued by post-16 educators and potential employers.*

*To succeed, learners must complete a Skills Challenge Certificate which includes the following assignments:*

- *Individual Project - carry out a research activity in an area of personal interest or one that reflects future educational or career aspirations.*
- *Enterprise and Employability Challenge - develop enterprising skills and attributes and enhance employability.*
- *Global Citizenship Challenge - provides opportunities to understand and respond appropriately to global issues whilst develop skills of Critical Thinking and Problem Solving and Creativity and Innovation.*

*Learners must also gain a grade A\* - C in English Language or Welsh Language together with Mathematics – Numeracy. A further three GCSEs are also required, of which two may be of equivalent qualifications i.e. BTEC or NVQ.*

*Learners who complete the Skills Challenge Certificate will receive a Skills Challenge qualification. Learners who are unlikely to achieve the required GCSE grades listed above can complete a Foundation Welsh Baccalaureate course.*





## Manyleb

### 1. Y byd digidol

Arholiad ar-sgrin sy'n cynnwys cwestiynau ar systemau technoleg ddigidol, gwerth technoleg ddigidol a safbwyntiau ar dechnoleg ddigidol.

### 2. Arferion digidol

Asesiad di-arholiad yn cynnwys dwy adran. Yn Adran A, bydd dysgwyr yn holi set ddata a fydd wedi'i darparu ac wedi'i mewnforio i daenlen er mwyn gallu cwblhau Adran B, lle y byddent yn creu gwefan sy'n ymgorffori naill ai animeiddiad neu gêm sy'n gysylltiedig â chyd-destun penodol.

### 3. Cyfathrebu yn y byd digidol

Asesiad di-arholiad yn canolbwyntio ar farchnata asedau digidol gan ddefnyddio'r cyfryngau cymdeithasol. Bydd dysgwyr yn creu asedau digidol sy'n gysylltiedig â chyd-destun penodol ac yna'n llunio ymgyrch cyfathrebu digidol ar-lein mewn perthynas â nhw.

## DULL ASESU

### 2025 Gwaith Blwyddyn 10

Uned 2 - Asesiad di-arholiad 45 awr

### 2026 Gwaith Blwyddyn 11

Uned 1 - Arholiad Ar-sgrin 1½ awr (Mai)

Uned 3 - Asesiad di-arholiad 15 awr

## Syllabus

### 1. The digital world

*An on-screen examination comprising questions on digital technology systems, the value of digital technology and perspectives on digital technology.*

### 2. Digital practices

*A non-examined assessment comprising of two sections. In Section A, learners will interrogate a supplied data set imported into a spreadsheet in order to inform Section B, where they will create a website incorporating either an animation or a game related to a set context.*

### 3. Communicating in the digital world

*A non-examined assessment focusing on marketing digital assets using social media. Learners will create digital assets related to a set context and then formulate an online digital communications campaign around them.*

## METHODS OF ASSESSMENT

### 2025 Year 10 work

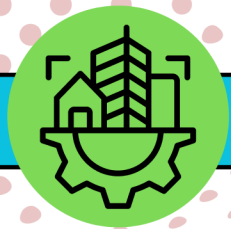
Unit 2- Non-exam assessment 45 hours

### 2026 Year 11 work

Unit 1- On-screen examination 1½ hours

(May)

Unit 3 - Non-exam assessment 15 hours



## Manyleb

### 1. Deall effeithiau cyflawniadau peirianyddol.

Disgrifio datblygiadau peirianyddol.  
Egluro effeithiau cyflawniadau peirianyddol.  
Egluro sut mae materion amgylcheddol yn effeithio ar gymwysiadau peirianyddol.

### 2. Deall nodweddion deunyddiau peirianyddol.

Disgrifio'r nodweddion sydd eu hangen mewn perthynas â deunyddiau ar gyfer cynhyrchion peirianyddol. Egluro sut y caiff deunyddiau eu profi am nodweddion. Dewis deunyddiau at ddiben.

### 3. Gwybod am brosesau ffurfio deunyddiau peirianyddol

Disgrifio prosesau peirianyddol.  
Disgrifio cymwysiadau prosesau peirianyddol.

### 4. Gallu datrys problemau peirianyddol

Defnyddio technegau mathemategol i ddatrys problemau peirianyddol. Trosi rhwng brasluniau isomedrig a thaflluniadau orthograffig 3edd ongl. Dadansoddi sefyllfaoedd mewn perthynas â phroblemau peirianyddol.  
Cynnig atebion mewn ymateb i broblemau peirianyddol.

## GWAITH CWRS

### Uned 1: Cynhyrchu Cynhyrchion Peirianyddol.

Datblygu dealltwriaeth o ddiagramau peirianeg. Cynhyrchu cynnyrch gan ddadansoddi diagramau peirianeg a roddwyd.

### Uned 2: Dylunio Peirianyddol.

Dadansoddi cynnyrch parod gan ddatblygu syniadau a diagramau peirianeg o'r cynnyrch.

## PAPUR ARHOLIAD

### Uned 3: Datrys Problemau Peirianyddol

- Arholiad 90 munud.
- Cyfanswm o 60 o farciau.
- Tri chwestiwn ar bob papur.

## Dull Asesu

Uned 1 - **40%**  
Uned 2 - **20%**  
Uned 3 - **40%**

## Syllabus

### 1. Understand effects of engineering achievements.

Describe engineering developments. Explain effects of engineering achievements. Explain how environmental issues affect engineering applications.

### 2. Understand properties of engineering materials.

Describe properties required of materials for engineering products. Explain how materials are tested for properties. Select materials for a purpose.

### 3. Know forming processes of engineering materials

Describe engineering processes  
Describe applications of engineering processes

### 4. Be able to solve engineering problems

Use mathematical techniques for solving engineering problems. Convert between isometric sketches and 3rd angle orthographic projections. Analyze situations for engineering problems. Propose solutions in response to engineering problems.

## COURSE WORK

### Unit 1: Producing Engineering Products

Analyse and develop understanding of engineering drawings. Produce a product using information from engineering drawings.

### Unit 2: Engineering Design.

Analyse existing products, develop ideas and engineering drawings of product.

## EXAM PAPER

### Unit 3: Solving Engineering Problems

- 90 minute examination.
- Total of 60 marks.
- Three questions on each paper.

## Assessment Method

Unit 1 - **40%**  
Unit 2 - **20%**  
Unit 3 - **40%**





## Manyleb

Mae'r cwrs yn rhoi cyfleoedd i ddysgwyr ddatblygu sgiliau perfformio, cyfansoddi a gwerthuso drwy astudio'r meysydd canlynol:

- Ffurfiâu a Dyfeisiau Cerddorol
- Cerddoriaeth ar Gyfer Ensemble
- Cerddoriaeth Ffilm
- Cerddoriaeth Boblogaidd

### Bydd dau waith gosod i'w hastudio yn ogystal

- Un darn o waith cerddorfaol
- Un gân leisiol gyfoes

#### ASESU:

##### **PERFFORMIO 32.5%**

Asesir yn fewnol gan yr athro. Rhaid chwarae dau ddarn (y dysgwyr i ddewis perfformio fel unawdydd neu fel aelod o grŵp) sydd yn para cyfanswm o 4-6 munud.

##### **CYFANSODDI 32.5%**

Asesir gan yr athro. Rhaid cyfansoddi dau ddarn cyferbyniol; un fel ymateb i friff dewisol gan CBAC. Rhaid i gyfanswm y ddau ddarn fod rhwng 3-6 munud.

##### **GWERTHUSO 35%**

Arholiad digidol allanol yn para 1 awr 30 munud.

#### **Dull Asesu**

Perfformio – **32.5%**

Cyfansoddi – **32.5%**

Gwerthuso – arholiad allanol – **35%**

## Syllabus

The course provides opportunities for learners to develop performance, composition and evaluation skills by studying the following areas:

- Musical Forms and Devices
- Music for Ensemble
- Film Music
- Popular Music

### There will also be two set works to be studied:

- One piece of orchestral work
- One contemporary vocal song.

#### ASSESSMENT:

##### **PERFORMING 32.5%**

Assessed internally by the teacher, two pieces must be played (the learners to choose to perform as a soloist or as a member of a group) lasting a total of 4-6 minutes.

##### **COMPOSING 32.5%**

Assessed by the teacher. Learners must compose two contrasting pieces, one as a response to a brief set by the WJEC. Both compositions must be between 3-6 minutes in total.

##### **APPRAISING 35%**

External digital exam lasts 1 hour 30 minutes.

#### **Assessment Method**

Performing – **32.5%**

Composing – **32.5%**

Appraising – external exam – **35%**



## Manyleb

Mae cynnwys y maes llafur yn seiliedig ar y meysydd canlynol:

- Dangos ymwybyddiaeth o ddiwylliant a chymdeithasau'r gwledydd a'r cymunedau lle mae'r Sbaeneg yn cael ei siarad
- Gwneud cysylltiadau â'u hieithoedd a'u diwylliant eu hunain
- Mynegi eu hunain mewn amrywiaeth o gyd-destunau ac at wahanol gynulleidfaoedd a dibenion

### Uned 1 - Llafaredd

Prawf siarad: 7-10 munud

- Cyfathrebu'n ystyrlon; disgrifio, adrodd, mynegi a chyfiawnhau barn
- Dangos gwybodaeth a dealltwriaeth drwy eu hymatebion mewn amrywiaeth o gyd-destunau
- Dangos ynganiad a goslef cywir

### Uned 2 - Darllen ac Ysgrifennu

Asesiad di-arholiad 1 awr

- Deall ac ymateb i Sbaeneg ysgrifenedig
- Cyfathrebu'n effeithiol yn ysgrifenedig
- Mynegi a chyfiawnhau safbwyntiau yn ysgrifenedig

### Uned 3 - Gwrando

Arholiad ysgrifenedig: 45 munud

- Gwrando ac ymateb i Sbaeneg llafar mewn amrywio gyd-destunau ee. hysbyseb/podlediad
- Dangos gwybodaeth a dealltwriaeth o eirfa, gramadeg a strwythurau Sbaeneg llafar

### Uned 4 - Darllen ac Ysgrifennu

Arholiad ysgrifenedig: 1 awr 30 munud

- Dangos eu gwybodaeth a'u dealltwriaeth o eirfa, gramadeg a strwythurau Sbaeneg trwy ddarllen ac yn ysgrifenedig
- Mynegi eu hunain mewn amrywiaeth o gyd-destunau ar gyfer cynulleidfaoedd a dibenion gwahanol
- Cyfieithu o'r Sbaeneg i'r Gymraeg/Saesneg.

## DULL ASESU

### Uned 1 - Llafaredd

Asesiad di-arholiad gyda'r athro o dan amodau arholiad, 30% o'r cymhwyster

### Uned 2 - Darllen ac Ysgrifennu

Asesiad di-arholiad yn cael ei gynnal o dan amodau arholiad, 15% o'r cymhwyster

### Uned 3 - Gwrando

Arholiad ysgrifenedig, 20% o'r cymhwyster

### Uned 4 - Darllen ac Ysgrifennu

Arholiad Ysgrifenedig, 35% o'r cymhwyster

## Syllabus

The content of the syllabus is based on the following areas:

- Showing awareness of the culture and societies of the countries and communities where Spanish is spoken.
- Making connections with their own languages and culture.
- Express themselves in a variety of contexts and for different audiences and purposes

### Unit 1 - Oracy

Speaking test: 7-10 minutes

- Communicating meaningfully; describing, reporting, expressing and justifying opinions
- Demonstrate knowledge and understanding through their responses in a variety of contexts
- Demonstrate correct pronunciation and intonation

### Unit 2 - Reading and Writing

1-hour non-exam assessment.

- Understanding and responding to written Spanish
- Communicating effectively in writing
- Express and justify opinions in writing

### Unit 3 - Listening

Written examination: 45 minutes

- Listening and responding to spoken Spanish in various contexts eg. adverts/podcasts.
- Demonstrate knowledge and understanding of vocabulary, grammar and structures of spoken Spanish

### Unit 4 - Reading and Writing

Written examination: 1 hour 30 minutes.

- Demonstrate their knowledge and understanding of Spanish vocabulary, grammar and structures through reading and writing.
- Expressing themselves in a variety of contexts for different audiences and purposes.
- Translation from Spanish to Welsh/English.

## ASSESSMENT METHOD

### Unit 1 - Oracy

Non-exam assessment with the teacher under exam conditions, 30% of the qualification

### Unit 2 - Reading and Writing

Non-exam assessment conducted under exam conditions, 15% of the qualification

### Unit 3 - Listening

Written examination, 20% of the qualification

### Unit 4 - Reading and Writing

Written Examination, 35% of the qualification





## Manyleb

Mae'r cwrs Hanes TGAU yn un hynod o ddiddorol sy'n canolbwyntio ar astudiaethau o hanes Cymru, Prydain, a'r Byd ehangach. Datblygir sgiliau ymchwilio, dadansoddi, cwestiynu, dehongli a dadlau y dysgwyr yn ystod y cwrs.

### Y Cyrsiau

**Uned 1:** Cymru yng Nghyfnod y Rhyfel Cartref 1603- tua 1660

**Uned 2:** Y Pla Du tua 1330- tua 1360: Astudiaeth achos ar gymdeithas yn yr oesoedd canol.

**Uned 3:** Newidiadau yng Nghymdeithas yr Unol Daleithiau tua 1880- tua 1980.

**Uned 4:** Cymdeithas sy'n newid-Gwaith Cwrs

### Arholiadau

**Uned 1:** Arholiad Ysgrifenedig 1 awr (30%)

**Uned 2:** Asesiad di-arholiad ar sgrin 3 awr (20%)

**Uned 3:** Arholiad ysgrifenedig 1 awr (30%)

**Uned 4:** Asesiad di-arholiad (20%)

### Dull Asesu

Arholiad Papur 1 a 3 - **60%**

Gwaith Cwrs - Ar sgrin **20%**

-Ysgrifenedig **20%**

## Syllabus

*History GCSE is an exciting course, concentrating on history in Wales, Britain, and the wider world. Learners will develop research skills, analyse, question, debate and interpret important historical events throughout the course.*

### The Courses

**Unit 1:** *Wales in the era of the Civil War 1603- c. 1660*

**Unit 2:** *The Black Death c. 1330- c.1360: A case study on society in medieval times.*

**Unit 3:** *Changes in United States Society c1880- c.1980.*

**Unit 4:** *Coursework-changing society*

### Examinations

**Unit 1:** *1 hour Written Exam (30%)*

**Unit 2:** *3 hour on-screen non-exam assessment (20%)*

**Unit 3:** *1 hour written exam (30%)*

**Unit 4:** *Non-exam assessment (20%)*

### Assessment Method

Paper 1 and 3 Exam - **60%**

Coursework - On screen **20%**

- Written **20%**



## Manyleb

Mae'r cwrs Busnes TGAU yn ddiddorol iawn ac yn rhoi blas ar nifer o feysydd busnes gan gynnwys marchnata, cyllid, adnoddau dynol a chynhyrchu. Rydym yn astudio busnesau real, yn lleol ac yn genedlaethol.

Y Fanyleb - mae 6 maes testun

### 1. Gweithgaredd Busnes

Yn ganolog i weithgaredd busnes mae menter ac entrepreneuriaid sy'n cychwyn busnesau. Mae busnesau yn amrywio o ran maint a pherchnogaeth.

### 2. Dylanwadau ar fusnes

Mae angen deall bod dylanwadau allanol yn effeithio ar fusnesau e.e. dylanwadau technolegol, moesegol, amgylcheddol economaidd, effaith globaleiddio a deddfwriaeth.

### 3. Gweithrediadau

Mae hyn yn ymwneud â rheoli adnoddau, ansawdd a'r gadwyn gyflenwi er mwyn gwerthu a llwyddo yn y marchnadoedd y gweithredir ynddynt.

### 4. Cyllid

Rhaid deall pwysigrwydd paratoi a chreu cyfrifon ariannol a dadansoddi perfformiad ariannol y busnes.

### 5. Marchnata

Mae marchnata yn ceisio adnabod, rhagweld a bodloni anghenion y cwsmeriaid i greu cymysgedd marchnata llwyddiannus.

### 6. Adnoddau Dynol

Mae'n cynnwys recriwtio, hyfforddiant, trefnu, cadw, datblygu ac ysgogi gweithwyr.

*Mae llawer yn dewis astudio Busnes yn y sector trydyddol ac mae astudio'r pwnc ar gyfer TGAU yn rhoi sylfaen gadarn i chi wneud hyn.*

*Many choose to study Business in Yr 12 and opting for the subject at GCSE gives a firm foundation for you to do so.*

### Dull Asesu

Papurau Arholiad - **60%**

Gwaith Cwrs - **40%**

## Syllabus

*Business GCSE is an exciting course where learners get an insight into various aspects of business including marketing, finance, human resources and production. We study real businesses, locally and nationally.*

*The Syllabus - there are 6 topic areas*

### 1. The Nature of Business activity

*At the heart of business activity is enterprise and entrepreneurs who initiate and grow businesses. Business organisations vary in size and ownership.*

### 2. Influences on Business

*Learners need to understand how external influences can have an effect on businesses e.g. technological, ethical, environmental and economical influences, globalisation and legislation.*

### 3. Business Operations

*Operations include how a business achieves quality and efficient supply chain so as to succeed in their market.*

### 4. Finance

*Learners need to understand the importance of financial reporting and analysing the financial performance of a business.*

### 5. Marketing

*Marketing is involved in identifying, predicting and fulfilling customer needs and creating a successful marketing mix.*

### 6. Human Resources

*This includes recruiting, training, organising, motivating and developing workers.*

### Assessment Method

Examination Papers - **60%**

Course Work - **40%**





## Manyleb

Mae cynnwys y maes llafur yn seiliedig ar y meysydd canlynol:

- Dangos ymwybyddiaeth o ddiwylliant a chymdeithasau'r gwledydd a'r cymunedau lle mae'r Ffrangeg yn cael ei siarad
- Gwneud cysylltiadau â'u hieithoedd a'u diwylliant eu hunain
- Mynegi eu hunain mewn amrywiaeth o gyd-destunau ac at wahanol gynulleidfaoedd a dibenion

### Uned 1 - Llafaredd

Prawf siarad: 7-10 munud

- Cyfathrebu'n ystyrlon; disgrifio, adrodd, mynegi a chyfiawnhau barn
- Dangos gwybodaeth a dealltwriaeth drwy eu hymatebion mewn amrywiaeth o gyd-destunau
- Dangos ynganiad a goslef cywir

### Uned 2 - Darllen ac Ysgrifennu

Asesiad di-arholiad 1 awr

- Deall ac ymateb i Ffrangeg ysgrifenedig
- Cyfathrebu'n effeithiol yn ysgrifenedig
- Mynegi a chyfiawnhau safbwyntiau yn ysgrifenedig

### Uned 3 - Gwrando

Arholiad ysgrifenedig: 45 munud

- Gwrando ac ymateb i Ffrangeg llafar mewn amrywiol gyd-destunau ee. hysbyseb/podlediad
- Dangos gwybodaeth a dealltwriaeth o eirfa, gramadeg a strwythurau Ffrangeg llafar

### Uned 4 - Darllen ac Ysgrifennu

Arholiad ysgrifenedig: 1 awr 30 munud

- Dangos eu gwybodaeth a'u dealltwriaeth o eirfa, gramadeg a strwythurau Ffrangeg trwy ddarllen ac yn ysgrifenedig
- Mynegi eu hunain mewn amrywiaeth o gyd-destunau ar gyfer cynulleidfaoedd a dibenion gwahanol
- Cyfieithu o'r Ffrangeg i'r Gymraeg/Saesneg.

## DULL ASESU

### Uned 1 - Llafaredd

Asesiad di-arholiad gyda'r athro o dan amodau arholiad, 30% o'r cymhwyster

### Uned 2 - Darllen ac Ysgrifennu

Asesiad di-arholiad yn cael ei gynnal o dan amodau arholiad, 15% o'r cymhwyster

### Uned 3 - Gwrando

Arholiad ysgrifenedig, 20% o'r cymhwyster

### Uned 4 - Darllen ac Ysgrifennu

Arholiad Ysgrifenedig, 35% o'r cymhwyster

## Syllabus

The content of the syllabus is based on the following areas:

- Showing awareness of the culture and societies of the countries and communities where French is spoken.
- Making connections with their own languages and culture.
- Express themselves in a variety of contexts and for different audiences and purposes.

### Unit 1 - Oracy

Speaking test: 7-10 minutes

- Communicating meaningfully; describing, reporting, expressing and justifying opinions
- Demonstrate knowledge and understanding through their responses in a variety of contexts
- Demonstrate correct pronunciation and intonation

### Unit 2 - Reading and Writing

1-hour non-exam assessment.

- Understanding and responding to written French
- Communicating effectively in writing
- Express and justify opinions in writing

### Unit 3 - Listening

Written examination: 45 minutes

- Listening and responding to spoken French in various contexts eg. adverts/podcasts.
- Demonstrate knowledge and understanding of vocabulary, grammar and structures of spoken French.

### Unit 4 - Reading and Writing

Written examination: 1 hour 30 minutes.

- Demonstrate their knowledge and understanding of Spanish vocabulary, grammar and structures through reading and writing.
- Expressing themselves in a variety of contexts for different audiences and purposes.
- Translation from French to Welsh/English.

## ASSESSMENT METHOD

### Unit 1 - Oracy

Non-exam assessment with the teacher under exam conditions, 30% of the qualification

### Unit 2 - Reading and Writing

Non-exam assessment conducted under exam conditions, 15% of the qualification

### Unit 3 - Listening

Written examination, 20% of the qualification

### Unit 4 - Reading and Writing

Written Examination, 35% of the qualification

## Manyleb

Gall dysgwyr weithio o sawl ardal o'r maes llafur, sef:

- A** Celfyddyd Gain
- B** Dylunio Tecstilau
- C** Cyfathrebu Graffeg
- Ch** Dylunio Tri-Dimensiwn
- D** Ffotograffiaeth a/neu Fideo

### Asesiad 1 (Portffolio Ymgeisydd) - 60%

- Gwaith wedi'i osod yn fewnol ac wedi datblygu o bwyntiau dechreuol personol a chyfeiriedig
- Detholiad gan y dysgwr o waith a gynhyrchwyd o fewn y cwrs.
- Tystiolaeth o sut roedd yr dysgwr wedi ateb gofynion y 4 nod asesu

### Asesiad 2 (Tasg allanol) - 40%

- Cyfnod o astudiaeth fanwl o ddim mwy na 10 awr
- Papur cwestiynau yn cael ei gyflwyno i'r dysgwyr dim cynharach na mis Ionawr ym mlwyddyn yr arholiad.
- Mae'n rhaid i'r uned ddangos tystiolaeth o sut mae'r dysgwr wedi ateb gofynion y nodau asesu yn ystod y cyfnod paratoi.

### Dull Asesu

Asesiad 1 – Portffolio Ymgeisydd **60%**

Asesiad 2 – Tasg allanol **40%**

Caiff y ddau asesiad eu marcio'n fewnol a'u safoni'n allanol

## Syllabus

Learners may work from various areas of the syllabus  
i.e.

- A** Fine Art
- B** Textile Design
- C** Graphic Communication
- D** Three-Dimensional Design
- E** Photography and/or Video

### Assessment 1 (Pupil Portfolio) - 60%

- Internally set and developed from personal and/or given starting points.
- Selected and presented by candidate from work undertaken within the course
- Requires evidence of how the candidate has met each of the 4 assessment objectives

### Assessment 2 (Externally set task) - 40%

- A period of focused study of no longer than 10 hours.
- Exam question paper presented to the candidates no earlier than January in the year of the examination.
- Requires evidence of how the learner has met each of the assessment objectives during the preparatory period.

### Assessment Method

Assessment 1 – Candidate Portfolio **60%**

Assessment 2 – External set task **40%**

Both assessments will be marked internally and moderated externally.





## Manyleb

### Uned 1: Credoau, dysgeidiaethau ac arferion crefyddol ac anghrefyddol

- Natur Cred
- Credoau am fywyd ar ôl marw
- Hunaniaeth a Moesoldeb

Arholiad ysgrifenedig: 1 awr 15 munud - 30% o'r cymhwyster

### Uned 2: Themâu Crefydd a Pherthnasoedd:

- Priodas
- Godineb
- Ysgariad
- Perthynas un rhyw
- Atal cenhedlu

Asesiad di-arholiad: 6 awr - 20% o'r cymhwyster.

### Uned 3: Rolau, hawliau a chyfrifoldebau

- Perthynas y ddynoliaeth â'r byd naturiol
- Hawliau anifeiliaid
- Yr hyn sy'n ein gwneud ni'n ddynol
- Moeseg feddygol
- Rhyddid mynegiant crefyddol
- Y defnydd o gyfoeth personol

Arholiad ysgrifenedig: 1 awr 15 munud - 30% o'r cymhwyster

### Uned 4: Crefydd a hawliau dynol

- Credoau, dysgeidiaethau, arferion a safbwyntiau sy'n ymwneud â hawliau dynol
- Dewis ac ymchwilio i elusennau neu sefydliadau

Asesiad di-arholiad: 6 awr - 20% o'r cymhwyster

### Dull Asesu

**Uned 1:** Arholiad ysgrifenedig: 1 awr 15 munud - **30%**

**Uned 2:** Asesiad di-arholiad: 6 awr - **20%**

**Uned 3:** Arholiad ysgrifenedig: 1 awr 15 munud - **30%**

**Uned 4:** Asesiad di-arholiad: 6 awr - **20%**

## Syllabus

### Unit 1: Religious and non-religious beliefs, teachings and practices

- The Nature of Belief
- The belief in life after death
- Identity and Morality

Written examination: 1 hour 15 minutes - 30% of the qualification.

### Unit 2: Religion and Relationships Themes:

- Marriage
- Adultery
- Divorce
- A same-sex relationship
- Contraception

Non-exam assessment: 6 hours - 20% of the qualification

### Unit 3: Roles, rights and responsibilities

- Humanity's relationship with the natural world
- Animal rights
- What makes us human
- Medical ethics
- Freedom of religious expression
- The use of personal wealth

Written examination: 1 hour 15 minutes - 30% of the qualification

### Unit 4: Religion and human rights

- Beliefs, teachings, practices and views relating to human rights
- Selecting and researching charities or organizations

Non-exam assessment: 6 hours - 20% of the qualification

### Assessment Method

**Unit 1:** Written Exam: 1 hour 15 minutes - **30%**

**Unit 2:** Non-examination Assessment: 6 hours - **20%**

**Unit 3:** Written Exam: 1 hour 15 minutes - **30%**

**Unit 4:** Non-examination Assessment: 6 hours - **20%**



## Manyleb

Mae TGAU Daearyddiaeth yn cefnogi dysgwyr i ddod yn ddaearyddwyr annibynnol, cytbwys ac ystyriol gyda dealltwriaeth fanwl o ryngberthnasoedd gofodol a'r byd sy'n newid.

### Uned 1 - Ein Byd Ffisegol a Dynol

Arholiad ysgrifenedig 30% o'r cymhwyster (90 marc)

Maesydd Cynnwys: Dalgylchoedd Afon ac afonydd, Morliniau sy'n newid, Mudo a Newid aneddiadau

### Uned 2- Datblygu Sgiliau Gwaith Maes

Asesiad di-arholiad - ymholiad gwaith maes - 7 awr (heb gynnwys yr amser y mae'n ei gymryd i wneud y gwaith maes)

25% o'r cymhwyster (90 marc)

Pwrpas yr uned hon yw: archwilio gwaith maes a sgiliau, a datblygu dealltwriaeth o'r model ymholi chwe cham.

### Uned 3- Ein byd dynamig ac amrywiol

Arholiad ysgrifenedig: 30% o'r cymhwyster (90 marc)

Maesydd Cynnwys: Daearyddiaeth anghydraddoldeb, Uchafbwyntiau ac isafbwyntiau ein tywydd, Tywydd garw, Newid hinsawdd barhaus a Rheoli heriau byd eang.

### Uned 4 - Datrysiadau cynaliadwy

Asesiad di-arholiad - Ymarferiad gwneud penderfyniadau - 6 awr (3 awr i ymchwilio a 3 awr i ymateb i dasgau)

15% o'r cymhwyster 60 marc

Pwrpas yr uned hon yw: archwilio materion daearyddol presennol a dyfodol cynaliadwy, cyflwyno'r tri philer cynaliadwyedd a'r nodau cynaliadwyedd, ar sail gweithredu, a cynyddu sgiliau datrys problemau.

### Dull Asesu

Uned 1 - Arholiad **30%**

Uned 2 - Asesiad di-arholiad **25%**

Uned 3 - Arholiad **30%**

Uned 4 - Asesiad di-arholiad **15%**

## Syllabus

GCSE Geography supports learners to become independent, balanced and sympathetic geographers with a detailed understanding of spatial relationships and the changing world.

### Unit 1 - Our Physical and Human World

Written examination 30% of qualification (90 marks)

Areas of content: Drainage basin and rivers, Changing coastlines, Migration and Settlement Change.

### Unit 2 - Developing Fieldwork Skills

Non-examination assessment - Fieldwork enquiry

25% of qualification 90 marks

The purpose of this unit is to: explore both fieldwork and skills, and develop an understanding of the six-stage enquiry model.

### Unit 3- Our dynamic and diverse world

Written examination: 30% of qualification (90 marks)

Areas of content: The geography of inequality, The highs and lows of our weather, wild weather, Continual climate change and Managing global challenges

### Unit 4- Sustainable Solutions

Non-examination assessment - 6 hours (3 hours for research and 3 hours to respond to tasks)

15% of qualification (60 marks)

The purpose of this unit is to explore current geographical issues and sustainable futures, introduce the three pillars of sustainability and sustainability goals, based on taking action, and increase problem solving skills.

### Assessment method

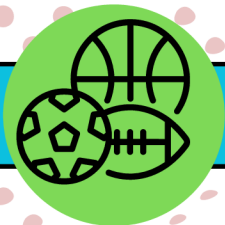
Unit 1 - Exam **30%**

Unit 2 - Non-examination assessment **25%**

Unit 3 - Exam **30%**

Unit 4 - Non-examination assessment **15%**





## Manyleb

### Pum Uned Theori

1. Iechyd, ymarfer ac ymarfer corff.
2. Ffisioleg ymarfer.
3. Dadansoddi symud.
4. Seicoleg chwaraeon a gweithgaredd corfforol.
5. Materion diwylliannol mewn chwaraeon a gweithgareddau corfforol.

Cyfes o gwestiynau gorfodol i brofi gwybodaeth a dealltwriaeth o'r adrannau canlynol:

- Ateb cwestiynau ar fideo.
- Ffactorau corfforol sy'n dylanwadu ar iechyd, ffordd o fyw a pherfformiad.
- Ffactorau seicolegol sy'n dylanwadu ar iechyd, ffordd o fyw a pherfformiad.
- Ffactorau technegol sy'n dylanwadu ar iechyd, ffordd o fyw a pherfformiad.

Rhaid i ddysgwyr gynnig **tri** gweithgaredd ymarferol ar gyfer eu hasesu.

Asesir dysgwyr mewn **tri** gweithgaredd gwahanol fel perfformiwr mewn o leiaf **un** gamp ar gyfer unigolyn, **un** gamp ar gyfer tîm ac **un** arall.

Bydd un gweithgaredd yn brif weithgaredd fydd â rhaglen ffitrwydd bersonol yn gysylltiedig â'r gweithgaredd.

### Dull Asesu

Ymarferol - **50%**

Papur Arholiad - **50%**

## Syllabus

### Five Theory Units

1. **Health, training and exercise.**
2. **Exercise physiology.**
3. **Movement analysis.**
4. **Psychology of sport and physical activity.**
5. **Socio-cultural issues in a sport and physical activity.**

A series of questions based on knowledge and understanding of following sections:

- Answer questions on a video
- Physical factors that influence health, lifestyle and performance
- Psychological factors that influence health, lifestyle and performance
- Technical factors that influence health, lifestyle and performance.

Learners must offer **three** practical activities for assessment.

Learners will be assessed in **three** different activities in the role of performer in at least **one** individual sport, **one** team sport and **one** other.

One activity will be a major activity which will have a personal fitness programme linked to the activity.

### Assessment Method

Practical - **50%**

Examination Paper - **50%**



# Iechyd a Gofal Cymdeithasol, a Gofal Plant Health and Social Care, and Childcare

## Manyleb

### Beth fydd y cymhwyster yn ei gynnwys?

Mae'r cymhwyster yn sicrhau bod y dysgwyr yn meithrin gwybodaeth a dealltwriaeth am ddatblygiad a gofal unigolion o genhedliad i henaith/diwedd oes. Bydd dysgwyr yn dod i ddeall sut mae darpariaeth gwasanaethau yn y sectorau Iechyd a Gofal Cymdeithasol, a Gofal Plant yng Nghymru yn cefnogi datblygiad a llesiant unigolion. Cyflwynir dysgwyr hefyd i amrywiaeth eang o rolau o fewn y sectorau Iechyd a Gofal Cymdeithasol, a Gofal Plant a fydd yn eu helpu nhw i ddatblygu dealltwriaeth o'r llwybrau gyrfa sydd ar gael iddyn nhw.

### GWAITH: Uned 1 : Twf, datblygiad a llesiant dynol.

Yn yr uned hon, bydd dysgwyr yn meithrin gwybodaeth a dealltwriaeth o: ddatblygiad dynol drwy gydol cylchred bywyd a'r ffyrdd y gellir effeithio ar hyn; sut gall unigolion gymryd rheolaeth o'u gofal hiechyd a'u llesiant; a sut gall ymyrryd yn gynnwys a chymryd camau ataliol gefnogi twf a datblygiad unigolion. Arholiad 1 awr 30 munud - **40%** o'r cymhwyster.

### Uned 2: Hybu a chynnal iechyd a llesiant.

Mae'r asesiad di-arholiad hwn yn cynnwys dau asesiad a osodir gan CBAC. Yn yr uned hon, bydd y dysgwyr yn meithrin gwybodaeth a dealltwriaeth o'r amrediad o wasanaethau iechyd a gofal cymdeithasol, a gofal plant sy'n cael eu darparu yng Nghymru a sut mae'r gwasanaethau hyn yn hybu ac yn cynnal iechyd a llesiant y genedl. Asesiad di-arholiad, tua 25 awr - **60%** o'r cymhwyster.

### Dull Asesu

Uned 1 Papur arholiad - **40%**

Uned 2 Gwaith Cwrs - **60%**

## Syllabus

**What will the qualification cover?** The qualification will equip learners with the knowledge and understanding of the development and care of individuals from conception to old age/end of life. Learners will gain an understanding of how service provision in the Health and Social Care, and Childcare sectors in Wales support development and well-being of individuals. Learners will also be introduced to a broad range of roles within the Health and Social Care, and Childcare sectors which will help them to develop an understanding of the career pathways available to them.

### WORK: Unit 1: Human growth, development and well-being.

In this unit, learners will gain knowledge and understanding of: human development across the life cycle and the ways in which this may be affected; how individuals can take control of their care and health and well-being; and how early intervention and prevention can support growth and development of individuals. Written examination: 1 hour 30 minutes - **40%** of the qualification.

### Unit 2: Promoting and maintaining health and well-being.

The non-exam assessment (NEA) is composed of two tasks set by WJEC. In this unit, learners will gain knowledge and understanding of the range of Health and Social Care and, Childcare Services provided in Wales and how these services promote and maintain the health and well-being of the nation. Non-exam assessment, approximately 25 hours - **60%** of the qualification.

### Assessment Method

Unit 1 Examination - **40%**

Unit 2 Course work - **60%**



## Manyleb

Bydd cymhwyster CBAC TGAU Drama yn eich cefnogi i:

- archwilio dramâu sydd wedi'u creu a'u perfformio gan bobl eraill i helpu chi ddatblygu doniau drama eich hunain.
- meithrin dealltwriaeth o amrywiaeth o dechnegau, ffurfiau, arddulliau, genres, a chyd-destunau.
- adfyfrio ar waith eich hunain, ei fireinio a'i werthuso.
- archwilio amrywiaeth, hunaniaeth a diwylliant
- darganfod ac archwilio eich sgiliau perfformio a/neu ddylunio.

### Uned - 1 Dyfeisio Theatr

Asesiad di-arholiad ymarferol 40%

Un darn dyfeisiedig mewn ymateb i ddewis o ysgogiadau, wedi'i berfformio mewn grŵp o rhwng dau a phum actor a hyd at bedwar dylunydd.

### Uned 2 - Perfformiad o Destun

Asesiad di-arholiad ymarferol 30%

Perfformio un darn o destun o'ch dewis. Asesir gan Arholwr Allanol ac fe'i perfformir mewn grŵp o rhwng dau a phedwar actor a hyd at ddau ddylunydd.

### Uned 3 - Dehongli Theatr

Arholiad digidol ar-sgrin (2 awr) 30%

Mae'r arholiad wedi'i rannu'n ddwy adran: Adran A ac Adran B. Bydd Adran A yn gofyn cwestiynau yn seiliedig ar destun gosod y byddwch wedi'i astudio mewn gwersi. Bydd Adran B yn gofyn cwestiynau yn seiliedig ar ddarn o gynhyrchiad theatr fyw o un o bedwar genre gosod y byddwch yn gallu ei wyllo yn yr arholiad. Y genres yw Theatr Gerdd, Naturiolaeth, Theatr mewn Addysg neu Theatr Gorfforol.

### Dull Asesu

Uned 1 - **40%** Asesiad di-arholiad

Uned 2 - **20%** Asesiad di-arholiad

Uned 3 - **40%** Arholiad digidol ar-sgrin

## Syllabus

*This WJEC GCSE in Drama will support you to:*

- *explore drama created and performed by other people to help develop your own talents.*
- *gain understanding of a range of techniques, forms, styles, genres and contexts.*
- *reflect on, evaluate and refine your work.*
- *explore diversity, identity and culture.*
- *discover and explore your performance and/or design skills.*

### Unit 1 - Devising Theatre

*Non-exam assessment 40%*

*One devised piece in response to a chosen stimulus, performed in a group of between two and five actors and up to four designers.*

### Unit 2 - Performance from a Text

*Non-exam assessment 30%*

*A performance of one extract from a text of your choice. Assessed by a Visiting Examiner and performed in a group of between two and four actors and up to two designers.*

### Unit 3 - Interpreting Theatre

*On-screen digital Examination (2 hours) 30%*

*The exam is split into two sections: Section A and Section B. Section A will ask questions based on a set text you will have studied in lessons. Section B will ask questions based on an excerpt of a live theatre production from one of four set genres that you will be able to watch in the exam. The genres are Musical Theatre, Naturalism, Theatre in Education or Physical Theatre*

### Assessment Method

*Unit 1 - **40%** Non-exam assessment*

*Unit 2 - **30%** Non-exam assessment*

*Unit 3 - **30%** On-screen digital examination*





## Manyleb

1. Gweithio gyda defnyddiau gwrthiannol a modelu.
2. Datblygu, Cynllunio, Cyfathrebu a phrofi Syniadau Dylunio mewn amrywiaeth o gyfryngau gan fodlu mewn 3D.
3. Gweithio gydag offer, defnyddiau a chydannau i gynhyrchu cynnyrch o safon
4. Edrych ar waith Dylunwyr Cyfoes a gwerthuso cynnyrch parod.
5. Gwybodaeth a Dealltwriaeth o bwrpas modelu a phrototeipiau, defnyddiau a chydannau yn ogystal â dulliau pacedu.

### Gwaith:

Nifer o dasgau ffocws/prosiectau byr i ddatblygu sgiliau, deallusrwydd a thechnegau perthnasol gan gynnwys modelu 3D a CAD/CAM.

### Gwaith Cwrs

- Un dasg dylunio a gwneud.
- Cynhyrchu gwaith ymchwil a syniadau mewn llyfr bras a thrwy fodlu.
- Datblygu'r syniad terfynol yn ffurfiol ar dudalennau A3. Y bwrdd arholi yn gosod y cyd-destun gyda'r dysgwr yn dewis y Briff Dylunio
- Gweithio mewn 3D mewn defnyddiau gwrthiannol a modelu amrywiol.

### Papur Arholiad

Pawb i sefyll un papur 2 awr

### Dull Asesu

Gwaith Cwrs - **50%**

Papur Arholiad - **50%**

## Syllabus

1. Working in resistant and modelling materials.
2. Developing, Planning, Communicating and testing ideas in different media including 3D models.
3. Working with tools, equipment, materials and components to produce quality products
4. Evaluate existing products and the influences of Contemporary Designers
5. Knowledge and Understanding of modelling and resistant materials, components and packaging.

### Work:

Focus tasks/short projects to develop skills, understanding and appropriate techniques which include 3D modelling and CAD/CAM.

### Course Work

- One design and make task.
- All research work and initial ideas to be developed in a sketch book and through modelling.
- The final design is developed in detail on A3 The examination board to set the context with the learner choosing his/her own brief.
- Work in various resistant and modelling materials.

### Exam Paper

All candidates to sit a 2 hour paper

### Assessment Method

Coursework - **50%**

Examination Paper - **50%**



Gyrfa Cymru  
Careers Wales

Mae Lowri Foulkes, ein Swyddog Gyrfa Cymru, ar gael i roi cyngor i'ch plentyn. Cysylltwch efo'r ysgol i wneud apwyntiad, os gwelwch yn dda.

Lowri Foulkes, our Careers Wales Officer, is available to give advice to your child. If you would like to make an appointment, please contact the school.



Ysgol Maes Garmon  
Stryd Conwy,  
Yr Wyddgrug  
01352 750678

[swyddfa@ymg.cymru](mailto:swyddfa@ymg.cymru)